

# Meeting Capacity

## Lyons Boardroom

288 square feet  
12'x24'  
8-foot ceiling  
Conference Table for 8

## Tarmac / Landing

500 square feet  
21'x26'  
8-foot ceiling  
Classroom: 24  
Hollow Square: 28  
U-shaped: 24  
Rounds: 40  
Rounds 3/4 set: 28  
Theatre: 50  
Conference: 28

\*NO DANCE FLOOR

## Lounge

Aviators Sports Pub  
100 ppl

Restaurant  
132 ppl

Poolside Reception  
120 ppl

## Ballroom

2,760 square feet  
60'x46'

14-foot ceiling

Classroom: 135  
Hollow Square: 70  
U-shaped: 70  
Rounds: 180-200  
Rounds 3/4 set: 150  
Rounds/DanceFloor: 140  
Theatre: 250  
Conference: 66

## Ballroom - 2 sections

1,840 square feet  
40'x46'

14-foot ceiling

Classroom: 80  
Hollow Square: 50  
U-shaped: 50  
Rounds: 80-90  
Rounds 3/4 set: 104  
Rounds/DanceFloor: 70  
Theatre: 175  
Conference: 48

## Ballroom - 1 section

920 square feet  
20'x46'

14-foot ceiling

Classroom: 30-40  
Hollow Square: 40  
U-shaped: 36  
Rounds: 40  
Rounds 3/4 set: 40  
Theatre: 70-90  
Conference: 40

Foyer Area: 8'x60'

Doors in Ballroom 70.5"W x 79"H



# Holiday Inn<sup>®</sup>

## ST. PETERSBURG NORTH/ CLEARWATER

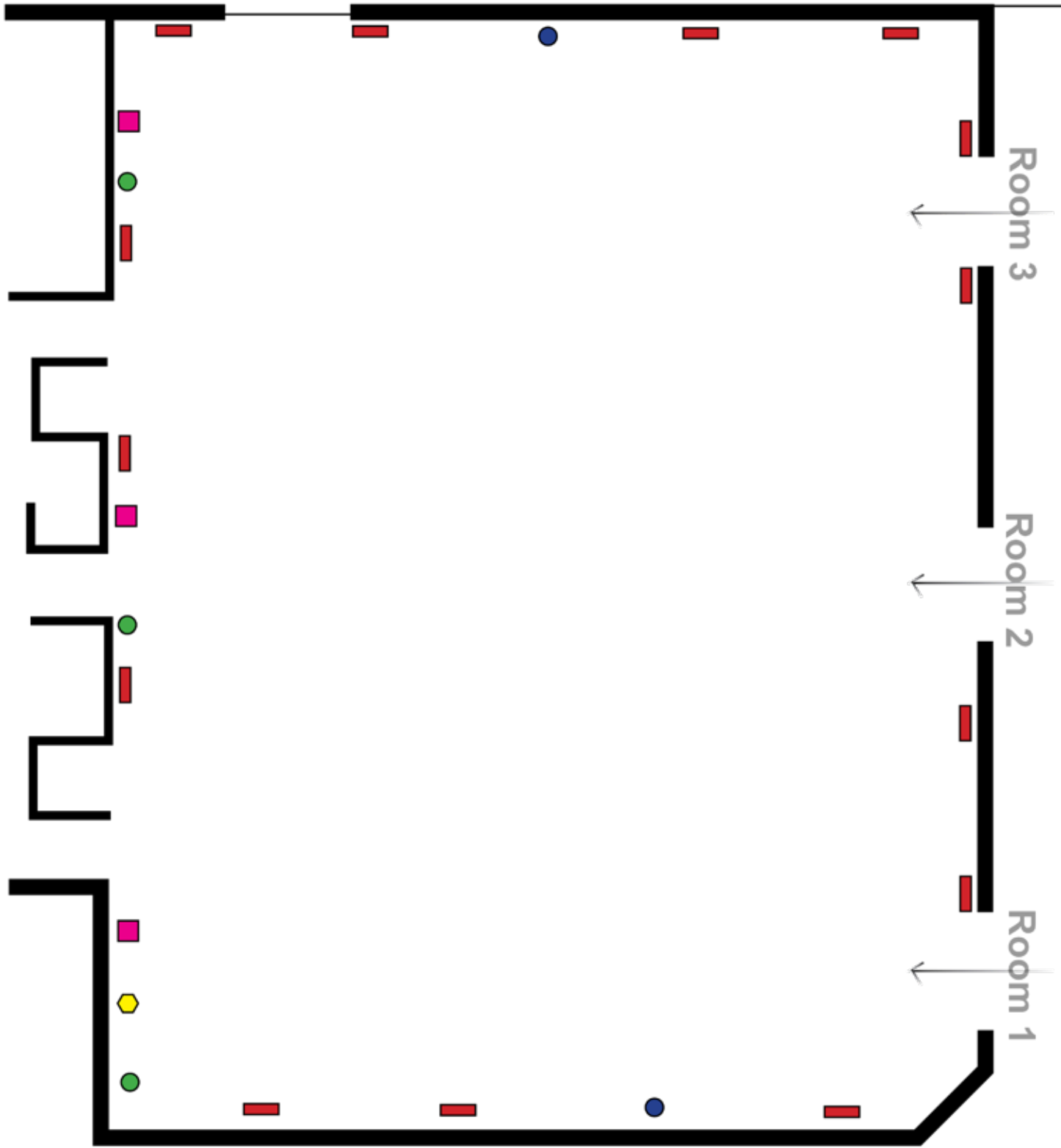
# “Concourse Ballroom” | Sections 1,2,3 Main Floor to right of lobby

1/100th scale

outside entrance

STAFF KITCHEN

Bathrooms



20'x46' = 1 section  
920 square feet

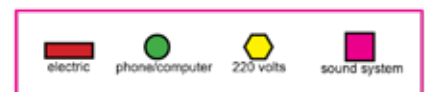
40'x46' = 2 sections  
1,840 square feet

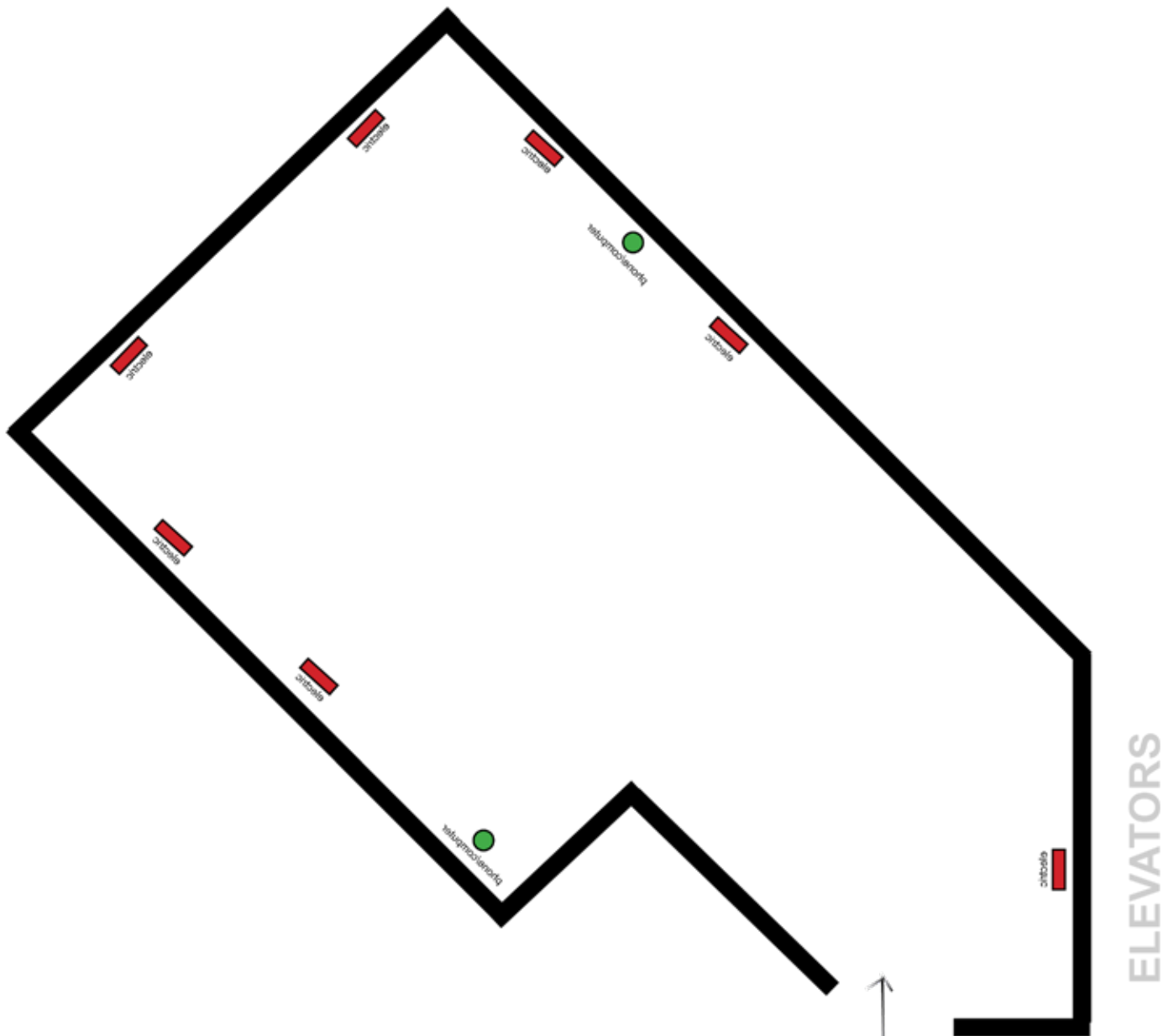
60'x46' = 3 sections  
2,760 square feet



**Holiday Inn**

ST. PETERSBURG NORTH/  
CLEARWATER





## Meeting Room Capacity

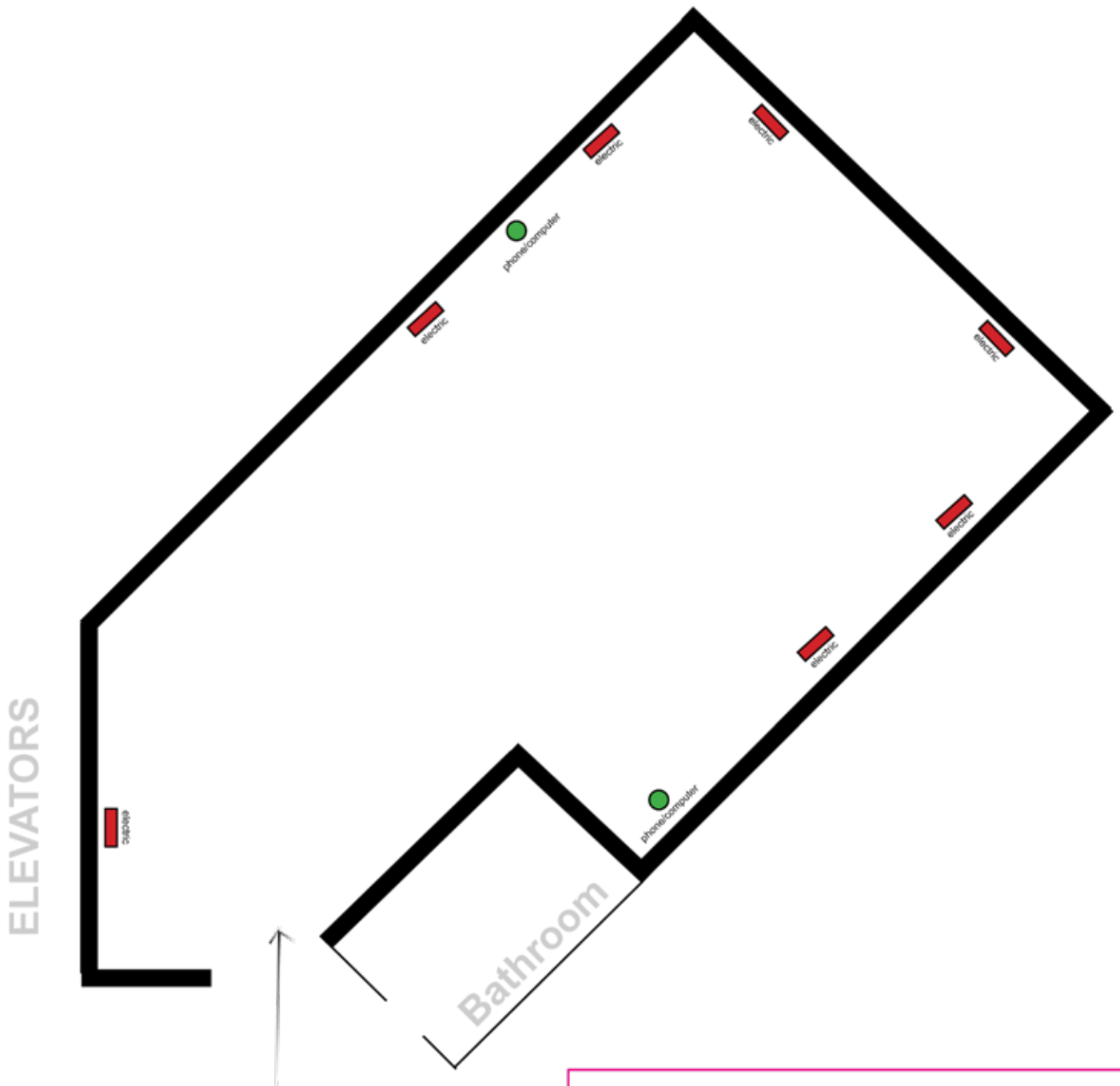
500 square feet | 21'x26' | 8' ceiling

Classroom:	24
Hollow Square:	28
U-Shaped:	24
Rounds:	40
Rounds 3/4 set:	28
Theatre:	50
Conference:	28



**Holiday Inn**<sup>®</sup>

ST. PETERSBURG NORTH/  
CLEARWATER



## Meeting Room Capacity

500 square feet | 21'x26' | 8' ceiling

Classroom:	24
Hollow Square:	28
U-Shaped:	24
Rounds:	40
Rounds 3/4 set:	28
Theatre:	50
Conference:	28



**Holiday Inn**<sup>®</sup>

ST. PETERSBURG NORTH/  
CLEARWATER